

# Pacific Magnetic Lifter

The Permanent Magnetic Lifter can be used in a variety of industries for the transportation and lifting of steel, engine parts, semi manufactured goods and moulds. Due to its magnetic force there is no need to use slings, clamps, or other holding devices eliminating damage to the surface of lifted goods.

## Features

- The Magnetic Lifter has a breakaway force 3.5 times greater than the working load limit.
- Weight ranging from 3 - 440kg.
- Safe: No Electricity is needed to operate the Magnetic Lifter. Once operated there is less than 1% residual magnetism.
- The simple switch and safety button design allows for one handed operation.
- Larger sizes available up to 6000kg.



## The right type of Magnetic Lifter for your application.

Reference of suitable plate thickness for each capacity.

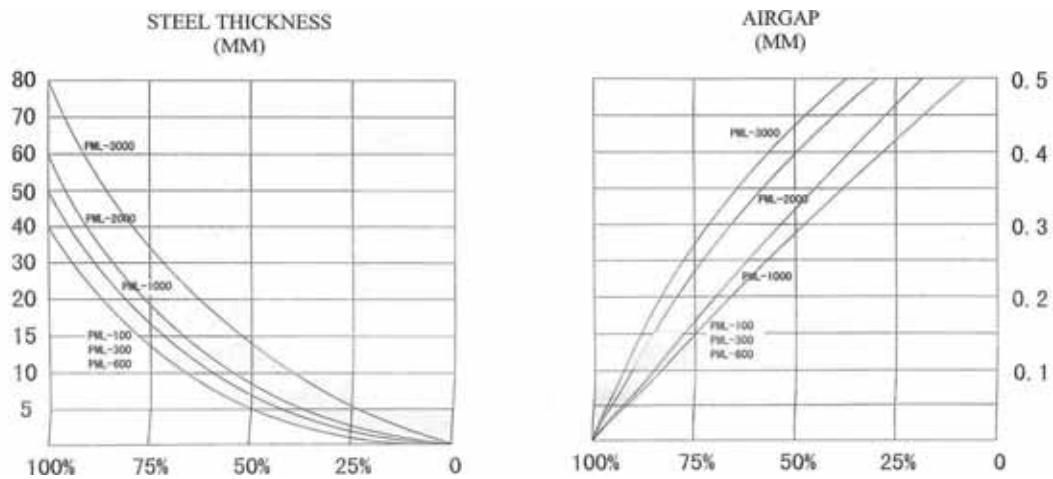
Model	Capacity	Suitable Thickness of plate (mm)	Material of Plate	Carbon Content	Absorbability (kg)
PML-1	100	>25	≤45# steel	Low	=100
PML-3	300	>35	≤45# steel	Low	=300
PML-6	600	>40	≤45# steel	Low	=600
PML-10	1000	>50	≤45# steel	Low	=1000
PML-20	2000	>60	≤45# steel	Low	=2000

Note: Use of plate with high-carbon content will reduce the absorbability to less than 50% of rated capacity. Use of plate with high carbon content not recommended.



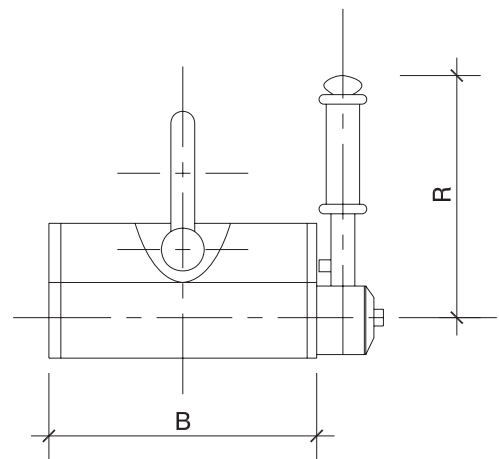
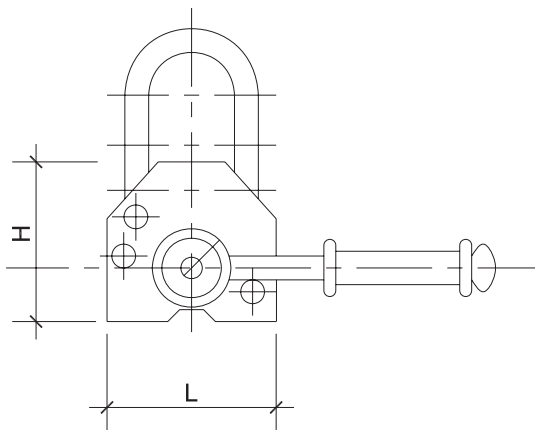
[www.pacifichoists.com.au](http://www.pacifichoists.com.au)

## Reduction in capacity with thin materials and rough surfaces



## Dimensions & Specifications

Stock Code		MAG010	MAG030	MAG060	MAG100	MAG200	MAG300	MAG600
W.L.L.	kg	100	300	600	1000	2000	3000	6000
Cylindrical carrying capacity	kg	50	150	300	500	1000	1500	3000
Max. break away force	kg	350	1050	2100	3500	7000	10500	21000
Weight	kg	3	10	24	50	125	240	440
Dimensions mm	L	92	162	232	258	378	286	430
	B	62	92	122	176	234	458	600
	H	67	91	117	163	212	261	355
	R	126	150	196	284	426	521	180



Your nearest distributor;

The information contained in this flyer is to be used as a guide only, specifications subject to change without notice.  
All Materials Handling/Lifting jobs should be assessed individually. Pacific Hoists products are NOT to be used for lifting or lowering person/s.

PACIFIC HOISTS PTY LTD

[www.pacifichoists.com.au](http://www.pacifichoists.com.au)



**Head Office**  
24 Foundry Road  
Seven Hills NSW 2147  
Tel: +61 2 8825 6900  
Fax: +61 2 8825 6999  
Email: [sales@pacifichoists.com.au](mailto:sales@pacifichoists.com.au)

**Western Australia**  
3/39 Tullock Way  
Canning Vale WA 6155  
Tel: +61 8 9456 4140  
Fax: +61 8 9456 4142  
Email: [sales@pacifichoists.com.au](mailto:sales@pacifichoists.com.au)

**New Zealand**  
11 Druces Road  
Manukau City South Auckland  
New Zealand  
Tel: +64 9 263 5566  
Fax: +64 9 263 5567  
Email: [info@pacifichoists.co.nz](mailto:info@pacifichoists.co.nz)

